

R-IVR-180A Relay



Product Code: 1-01-0071-03

Elife Power Relays are designed specially for use in **battery applications** and to operate in a **vibration environment**.

The main **key features** of our power relays include:

- High capacity and conduction efficiency.
- Contributes to energy saving thanks to reduced coil hold voltage.
- **It can be supplied with both DC and AC voltage.**
- Design for battery system.
- It can be directly driven by a PLC (210 mA @24 V).
- **Vibration-absorbing inner lining that protects the case.**
- It can be supplied with an ultra-wide Input Voltage Range.
- Capable for case temperature up to +70 °C.
- Very compact size 104x53x60 mm.

✓ **LED Status**

✓ **Non-Polarized Contact**



Elife
International

www.elifeinternational.com

+39.0565.944121 info@elifeinternational.com

Table 1: Description of R-IVR-180A Relay.

	VALUE
Supply Input Voltage: <i>(or AC effective voltage)</i>	From 20 to 144 V
Max. Switching Current:	180 A
Nominal Operating Power:	less than 5 W
Operate Time (at 20 °C):	Max. 30 ms
Release Time (at 20 °C):	Max. 10 ms
Max. Admissible Input Voltage:	160 V
Operating Temperature Range:	From -50 to 70 °C

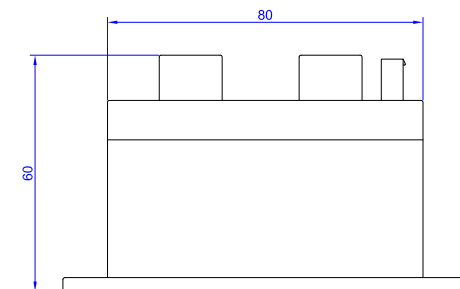
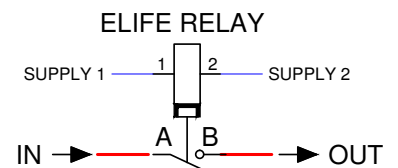
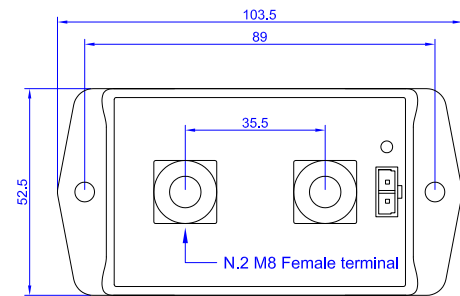


Figure 1: The drawing, size in mm, and the wiring diagram of Elife Relays.

This technical review shows the main features and technical information of R-IVR-180A Relay. For further information about this model and its applications, or to define an evaluation of your needs, please refer to our website to contact us.