

R-12V-90A Relay



Product Code: 1-01-0071-00

Elife Power Relays are designed specially for use in **battery applications** and to operate in a **vibration environment**.

The main **key features** of our power relays include:

- High capacity and conduction efficiency.
- Contributes to energy saving thanks to reduced coil hold voltage.
- **It can be supplied with both DC and AC voltage.**
- Design for battery system.
- It can be directly driven by a PLC (170 mA @12V).
- **Vibration-absorbing inner lining that protects the case.**
- It can be supplied with a low voltage.
- Capable for case temperature up to +70 °C.
- Very compact size 104x53x60 mm.

✓ **LED Status**

✓ **Non-Polarized Contact**



**Elife**
International

www.elifeinternational.com

+39.0565.944121 info@elifeinternational.com

Table 1: Description of R-12V-90A Relay.

	VALUE
Supply Input Voltage: (or AC effective voltage)	12 V
Max. Switching Current:	90 A
Nominal Operating Power:	less than 2 W
Operate Time (at 20 °C):	Max. 30 ms
Release Time (at 20 °C):	Max. 10 ms
Max. Admissible Input Voltage:	13.2 V
Operating Temperature Range:	From -50 to 70 °C

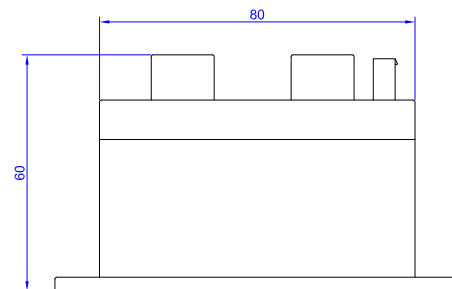
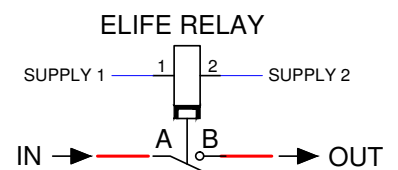
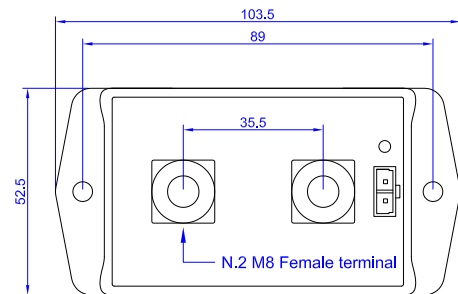


Figure 1: The drawing, size in mm, and the wiring diagram of Elife Relays.

This technical review shows the main features and technical information of R-12V-90A Relay. For further information about this model and its applications, or to define an evaluation of your needs, please refer to our website to contact us.