

# R-IVR-90A Relay



Product Code: 1-01-0071-02

Elife Power Relays are designed specially for use in **battery applications** and to operate in a **vibration environment**.

The main **key features** of our power relays include:

- High capacity and conduction efficiency.
- Contributes to energy saving thanks to reduced coil hold voltage.
- **It can be supplied with both DC and AC voltage.**
- Design for battery system.
- It can be directly driven by a PLC (105 mA @24 V).
- **Vibration-absorbing inner lining that protects the case.**
- It can be supplied with an ultra-wide Input Voltage Range.
- Capable for case temperature up to +70 °C.
- Very compact size 104x53x60 mm.

✓ **LED Status**

✓ **Non-Polarized Contact**



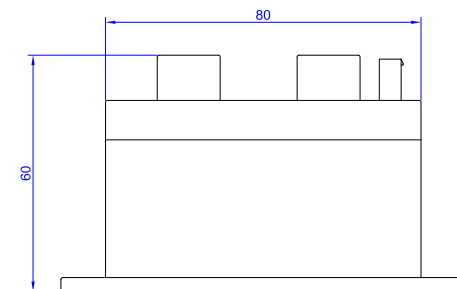
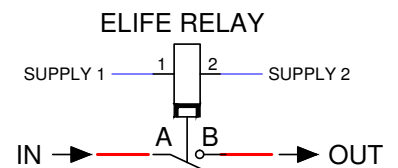
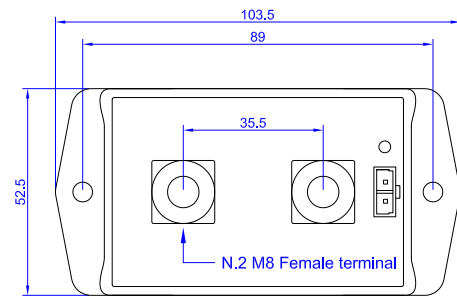
**Elife**  
International

[www.elifeinternational.com](http://www.elifeinternational.com)

+39.0565.944121 [info@elifeinternational.com](mailto:info@elifeinternational.com)

**Table 1:** Description of R-IVR-90A Relay.

|  | VALUE                   |
|--|-------------------------|
| Supply Input Voltage:<br>(or AC effective voltage) | <b>From 20 to 144 V</b> |
| Max. Switching Current:                            | <b>90 A</b>             |
| Nominal Operating Power:                           | <b>less than 2.5 W</b>  |
| Operate Time (at 20 °C):                           | Max. 30 ms              |
| Release Time (at 20 °C):                           | Max. 10 ms              |
| Max. Admissible Input Voltage:                     | 160 V                   |
| Operating Temperature Range:                       | From -50 to 70 °C       |



**Figure 1:** The drawing, size in mm, and the wiring diagram of Elife Relays.

This technical review shows the main features and technical information of R-IVR-90A Relay. For further information about this model and its applications, or to define an evaluation of your needs, please refer to our website to contact us.