

R-12V-400A Relay



Elife Power Relays 400A Series are designed specially for use in **battery applications** and to operate in a **vibration environment**.

The main **key features** of our power relays include:

- High Capacity and Conduction Efficiency.
- Smart Management of the Magnetizing Coil Power Supply.
- Designed for Battery System.
- **Vibration-absorbing inner lining that protects the case.**
- It can be supplied with a low voltage.
- Capable for case temperature up to +70 °C.
- Very compact size 104x53x60 mm.

Smart Management of the Magnetizing Coil Power Supply

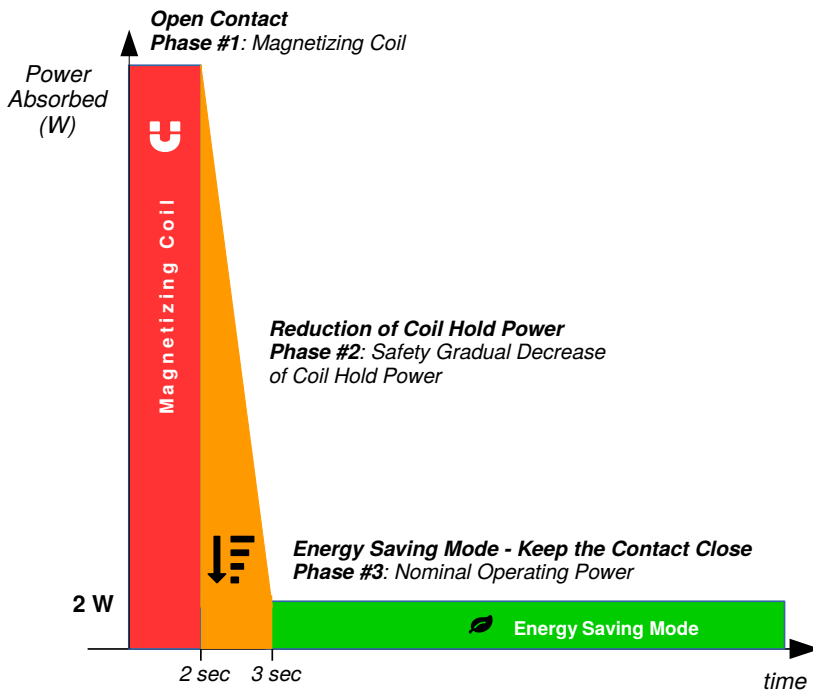


Figure 1: After the first 2 seconds, the power absorbed decrease gradually until reaching the Operating Nominal Power (less than 2 W).

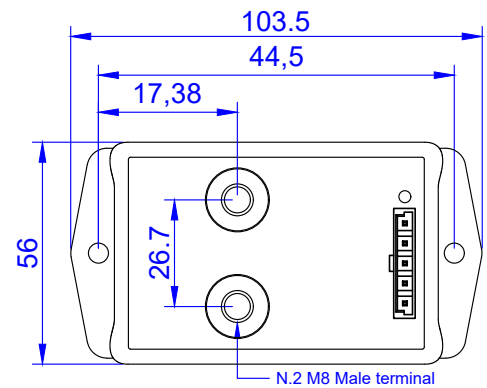
Elife Power Relays 400A Series are available in four configurations:

| | NORMAL | FEEDBACK | PLC | PLC + FEEDBACK |
|------------------------------|------------|--------------|----------------|-----------------|
| Commercial Name: | R-12V-400A | R-12V-400A-F | R-12V-400A-PLC | R-12V-400A-FPLC |
| State of the Relay Contacts: | | ☑ | | ☑ |
| It can be driven by a PLC: | | | ☑ | ☑ |

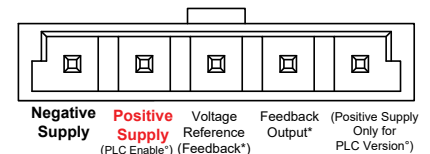
Table 1: Description of R-12V-400A Relay.

| | VALUE |
|--------------------------------|-------------------|
| Supply Input Voltage: | 12 V |
| Max. Switching Current: | 400 A |
| Nominal Operating Power*: | less than 2 W |
| Operate Time (at 20 °C): | Max. 25 ms |
| Release Time (at 20 °C): | Max. 15 ms |
| Max. Admissible Input Voltage: | 13.2 V |
| Operating Temperature Range: | From -50 to 70 °C |

* The Nominal Operating Power refers to the power absorbed after 3 secs to hold the Relay contact close.



Connector Legend:



* Only valid for Feedback Version

° Only valid for PLC Version

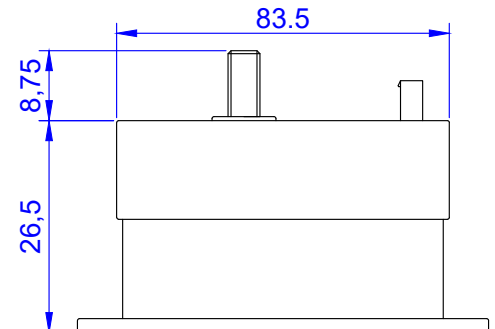


Figure 2: The drawing - size in mm - and the wiring diagram of Elife Relay 400A Series (Normal Version).